

PRESSURE RELIEF & PRESSURE REGULATING VALVES FOR PROCESS INDUSTRIES

PRESSURE RELIEF VALVES



FLANGED END



ASME/UV CERTIFIED

SIZE RANGE 1" TO 8"
PRESSURE RATING
UPTO 2500#



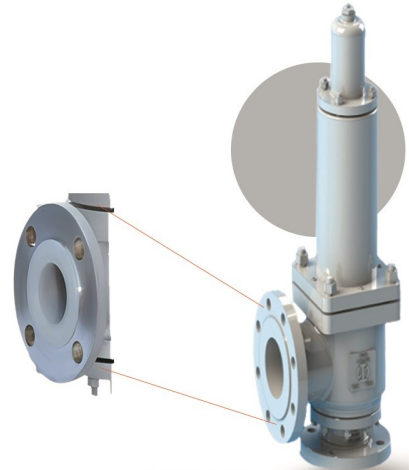
SCREWED END

SIZE RANGE 1" TO 8"
PRESSURE RATING
UPTO 2500#

PFA / PTFE LINED PRESSURE RELIEF VALVE

PRESSURE RATING: #150 / #300
MATERIALS: CS + PTFE, SS+ PTFE
OPTIONS: BELLOWS, LIFTING
LEVER, TEST GAG, FINNED
BONNET.

SIZE RANGE: 1" TO 6"
PFA LINED (3MM+ THICKNESS)
HIGH CORROSION RESISTANCE



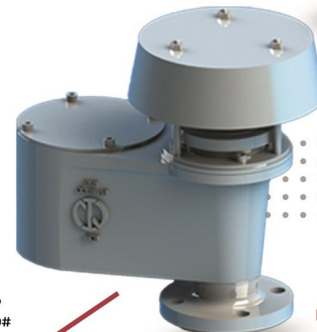
TANK PROTECTION DEVICES



**TWIN PILOT
OPERATED REGULATOR**
SIZE RANGE: 1" TO 6"
PRESSURE RATING: 150 & 300#



**EMERGENCY
RELIEF VALVE**
SIZE RANGE: 8" TO 24"
PRESSURE RATING: 150#



**PRESSURE VACUUM
RELIEF VALVE**
SIZE RANGE: 2", 3" & 4"
PRESSURE RATING: 150#

**DIRECT ACTING SPRING
LOADED REGULATOR**
SIZE RANGE: UPTO 2"
PRESSURE RATING: 150 & 300#



TANK



FLAME ARRESTOR
SIZE RANGE: 0.5" TO 12"
PRESSURE RATING: 150#

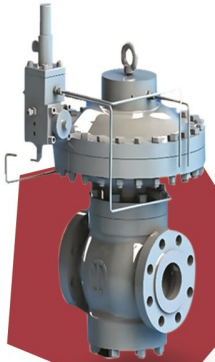
HIGH ACCURACY WHERE EXTREMELY LOW SET POINT
LOW SET POINT TECHNOLOGY AS UPTO 0.62 MBAR



VALVES & SYSTEM FOR NATURAL GAS INDUSTRIES

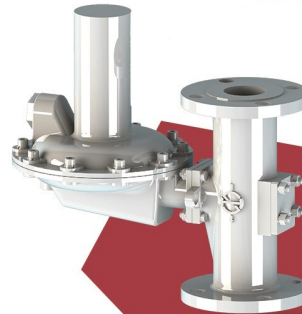
DJK
ENERGY
VALVES & PUMPS

PRESSURE REGULATORS



PILOT OPERATED PRESSURE REGULATOR

SIZE RANGE: UPTO 14"
PRESSURE RATING: 1500#

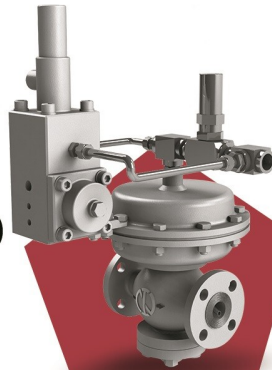


DIRECT ACTING PRESSURE REGULATOR (LEVER TYPE)

SIZE RANGE: 0.5" TO 2"
PRESSURE RATING: 150#

PILOT OPERATED PRESSURE REGULATOR (SELF ACTUATED)

SIZE RANGE: 1" TO 4"
PRESSURE RATING: 150#, 300#

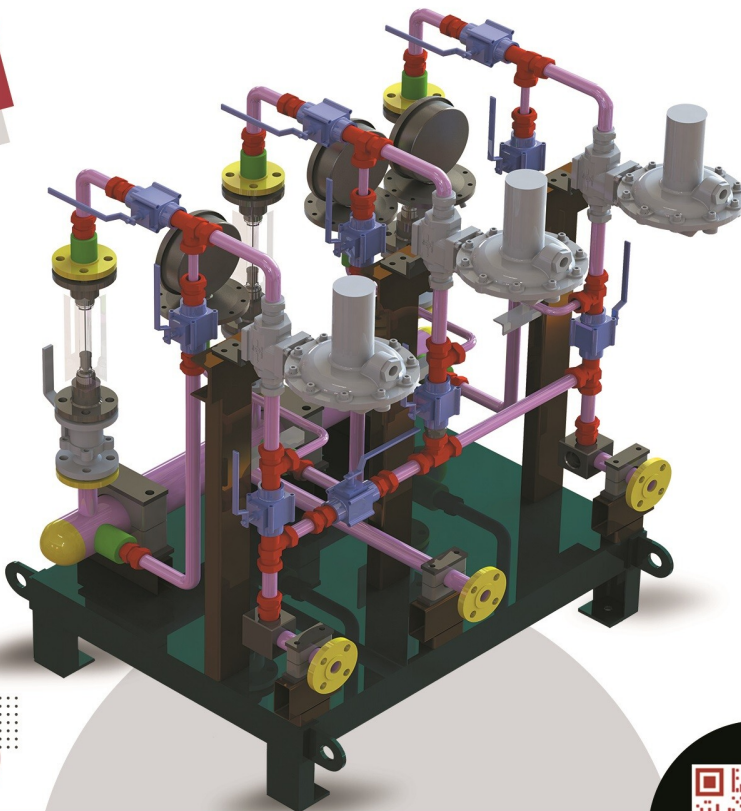


DIRECT ACTING PRESSURE REGULATOR (SPRING LOADED)

SIZE RANGE: 0.5" TO 2"
(HIGHER SIZE ON REQUEST)
PRESSURE RATING: 150#, 300#
(HIGHER SIZE ON REQUEST)



HIGH PRESSURE REDUCTION STATION



WE OFFER COMPLETE GAS CYLINDER MANIFOLD & HIGH PRESSURE
REDUCING STATIONS

COMPLETELY SELF ACTUATED SYSTEM
NO AUXILIARY POWER REQUIRED.

FOR NITROGEN, CARBON DIOXIDE, OXYGEN,
ARGON, AMONIA, CHLORINE AND OTHER GASES.

WE ALSO PROVIDE HYDROGEN PRESSURE REGULATION STATION
READY TO USE PACKAGE



✉ SALES@DJKVALVEPUMPS.COM
WWW.DJKVALVEPUMPS.COM

CONTACT / WHATSAPP
DJ: +1 832 213 9674
DEVA: +1 832 382 6034